

Center for ePathology

Cleveland Clinic Laboratories uses the latest technology in high resolution digital scanning and web-based viewing platforms to supplement conventional surgical pathology consultation diagnostic services.

Consultative Services

Clients with access to a high resolution scanner can submit consultation cases electronically using web-based applications. ePathology cases submitted to Cleveland Clinic Laboratories are triaged to our subspecialty teams comprised of the same experienced, specialty-trained Anatomic Pathologists who provide diagnostic services for Cleveland Clinic patients. This subspecialty approach ensures that every specimen submitted to Cleveland Clinic Laboratories is evaluated by a pathologist with a high level of diagnostic expertise in that specific field.

eIHC Capabilities

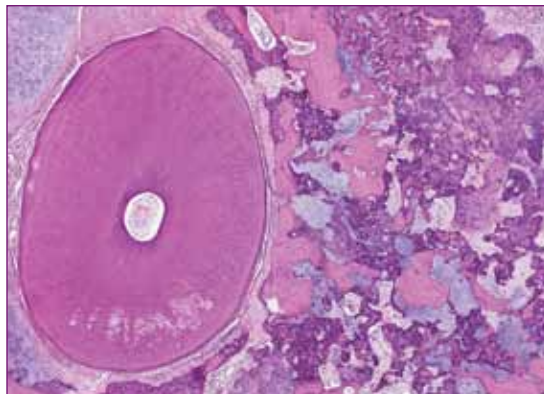
For consultation clients who seek immunohistochemical stains without interpretation, Cleveland Clinic Laboratories offers “eIHC”. Unstained slides or blocks from the laboratory can be immunohistochemically stained and scanned, and high resolution images of those stained slides can be made available for viewing and interpretation without the delays inherent in mail services. Your H&E microscope slides can also be scanned for archiving.

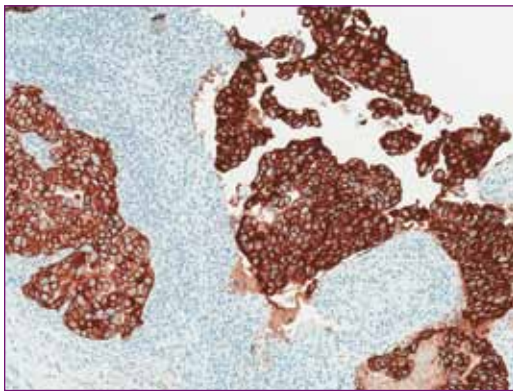
How to contact us:

Phone: (1) 216.445.1342

Fax: (1) 216.445.0724

Email: epathology@ccf.org





Consultative Services:

- Consults based on digital cases that have been scanned by the client.

eIHC:

- Immunohistochemical technical scanning provides images for your interpretation immediately after staining.

High Resolution Scanning

- Available to archive original microscope slides prior to deleterious testing or for secure preservation of cases in potential litigation.
- Area and linear measurement tools also available.
- Digital slides can be prepared for educational purposes, thereby conserving tissue. Cases can be shared via a website for educational conferences.

Cleveland Clinic Laboratories Center for ePathology

Medical Director



Thomas Bauer, MD, PhD
Director, Orthopaedic Pathology; Medical Director, ePathology
Board Certifications: Anatomic Pathology, Clinical Pathology
Specialty Interests:
Orthopaedic pathology, gastrointestinal pathology
Phone: (1) 216.444.6830
Email: bauert@ccf.org

Technical Specialist



Renee Slaw, MBA
Manager, Center for ePathology
Phone: (1) 216.445.8739
Email: slawr@ccf.org

Imaging Systems Analyst



Scott Mackie
Phone: (1) 216.445.9990
Email: mackies@ccf.org